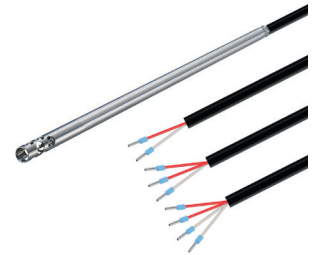


Air temperature probe with PVC cable

Article no.: 803753 1011

Air temperature probes are used for temperature measurement in gaseous media such as air ducts. Our air probes with PVC cable can be used in the temperature range from -30 to +105°C. The temperature sensor sits in a perforated stainless steel sleeve that protects the sensor while providing a fast response time. Simply configure your probe and submit the order code.



General Information	
Measuring range	-30 °C to +105 °C depending on sensor Type and connection cable
Perm. °C range cable	-30 °C to +105 °C
Accuracy	depending on sensor Type
Response time	t63 / t99: information is available on request
Pull-out force	≥ 30 N
Supply and output	
Max. meas. current	max. 1 mA
Supply voltage	approx. 5 V depending on measurement current
Measurement signal	passive (resistance value)
Ambient conditions	
Protection class	none (measuring element is exposed)
Humidity and moisture condensation resistance	according to application-specific qualification
Certificates and Standards	
Standards	DIN EN 61326-1:2013 DIN EN IEC 63000:2019-05
Directive	RoHS 2011/65/EU 2014/30/EU
Certificates	Certificate of suitability (on request)



Customizable options

- A-Measuring element
- B-Connection Type
- C-Length protection sleeve
- E-Material connection cable
- F-Length connection cable
- G-Connector
- H-Bend protection

A - Measuring element				
Code	Sensor	Accuracy / Tolerance resistance	min ²⁾	max ²⁾
A011	Pt100	Cl. A dT = ±(0,15 °C + 0,002 t) ¹⁾	-50 °C	+300 °C
A012	Pt100	Cl. B dT = ±(0,30 °C + 0,005 t) ¹⁾	-50 °C	+400 °C
A013	Pt100	1/3 Cl. B dT = ±(1/3 · (0,30 °C + 0,005 t)) ¹⁾	-50 °C	+200 °C
A014	Pt100	1/10 Cl. B dT = ±(1/10 · (0,30 °C + 0,005 t)) ¹⁾	±0 °C	+100 °C
A022	Pt500	Cl. B dT = ±(0,30 °C + 0,005 t) ¹⁾	-70 °C	+500 °C
A031	Pt1000	Cl. A dT = ±(0,15 °C + 0,002 t) ¹⁾	-50 °C	+300 °C
A032	Pt1000	Cl. B dT = ±(0,30 °C + 0,005 t) ¹⁾	-50 °C	+400 °C
A105	NTC 5 kOhm	R25 = 5 KOhm ±1 %	-40 °C	+125 °C
A110	NTC 10 kOhm	R25 = 10 KOhm ±1 %	-40 °C	+125 °C
A120	NTC 20 kOhm	R25 = 20 KOhm ±1 %	-40 °C	+125 °C
A210	Ni1000	-60 °C to 0 °C: dT = ±(0,4 °C + 0,028 · T) 0 °C to +150 °C: dT = ±(0,4 °C + 0,007 · T)	-60 °C	+150 °C

¹⁾according to IEC 751 / EN 60751 | ²⁾ Perm. range °C | Please note that the measuring range depends on the measuring element and the connecting cable. | Detailed information and the characteristics can be found in our download area.

B - Connection Type	
Code	Conn. Type
B2	2-Wire (2W)
B3	3-Wire (3W)
B4	4-Wire (4W)

Possible connections			
Sensor	2W	3W	4W
Pt	✓	✓	✓
NTC	✓		
Ni	✓	✓	✓

Protection sleeve

Material	Stainless steel 1.4571 316Ti	C - Length prot. sleeve		
Length (mm)	please choose	Code	Length (mm)	
Ø (mm)	6 ¹⁾	C0100	100 ¹⁾	
		C0200	200 ¹⁾	

other protective sleeve lengths and Ø available on request | ¹⁾ Tolerance ± 0,1 mm

E - Cable material and configuration connection cable

Picture	Code	IP	Connection Type	Color	From (°C) ¹⁾	To (°C) ¹⁾	Outside material	Material strand	Color strand	Ø (mm) ²⁾	Q (mm ²) ³⁾	Ω / m ⁴⁾
	E0000	IP67	2-Wire	black	-30	+105	PVC	PVC	rd, wt	4,8	0,22	0,07
	E0001	IP67	3-Wire	black	-30	+105	PVC	PVC	rd, wt, rd	4,8	0,22	0,07
	E0002	IP67	4-Wire	black	-30	+105	PVC	PVC	rd, wt, rd, wt	4,8	0,22	0,07

Insulation resistance: ≥ 100 MOhm at min. 100 VDC | ¹⁾Perm. range °C | ²⁾Tolerance ± 0,2 mm | ³⁾ Tolerance ± 0,03 mm² | ⁴⁾ per single strand

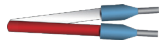
F - Length

Code	F010	F020	F030	F040	F050	F100	F150	F200
m	1	2	3	4	5	10	15	20

Other lengths on request

G - Connector

Code	Feature
G01	Insulated end ferrules (50 mm)



H - Bend protection

Picture	Length (mm)	Material	Code	Feature
	50	Stainless steel spring 1.4310 SUS 302	H0	Without (Standard)
			H1	Metal bend protection

Delivery and Assembly

Assembly instructions	by using a compression fitting or immersion sleeve The exposed measuring element is sensitive to mechanical damage. Therefore, please do not press in the tip of the sleeve with your fingers or with a pointed object.
Delivery and Packaging	Probe, seperatly packaged in PE bag

Your order code

Article no.	Measuring element	Connection Type	Length protection sleeve	Material connection cable	Length connection cable	Connector	Bend protection
803753 1011	A_____	B_____	C_____	E_____	F_____	G_____	H_____

Technical drawing

Customizable options			
A - Measuring element B - Connection Type	C - Length protection sleeve E - Material connection cable	F - Length connection cable G - Connector	H - Bend protection All dimensions in mm

2-Wire version



3-Wire version



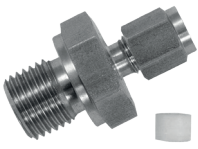
4-Wire version



Matching accessories: Compression fittings

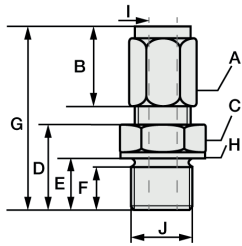
Compression fitting with PTFE clamping ring

Compression fittings with PTFE clamping ring can be used several times. They are only pressure-tight up to 10 bar. For assembly, please tighten the connecting nut of the compression fitting by hand as far as it will go (clearly noticeable) by hand. With a wrench suitable for the width across flats, please make a 1/4 turn for compression fittings with PTFE pressure ring.

	Article no.	809610 2XXX	Code	I - Ø Inside (mm)	Code	J - Process connection
	Temp. max	+260 °C	0	1	27	M6x1 ¹⁾
	Pressure proof up to	10 bar	1	1,5	28	M8x1 ¹⁾
	Material	Stainless steel 1.4571 316TI	3	3	22	M10x1
	Material clamping ring	PTFE	6	6	14	G1/8 "
	Scope of delivery	Compression fitting, packed in PE bag			12	G1/4 "
					11	G1/2 "
Your order code	809610 2	-	-	-	-	-

Append the code for Ø Inside & process connection to the article no. | ¹⁾ not available for Ø Inside (I) 6 mm

Dimensions for technical drawing

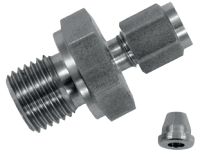


I	J	A	B	C	D	E	F	G	H
1	M6x1 ¹⁾	SW10	13	SW12	13	9	8	31	Ø10
1,5	M8x1 ¹⁾	SW10	13	SW12	13,5	9,5	8	31	Ø11,8
3	M10x1	Ø 1,5 & 3: SW10 Ø 6: SW12	13	SW14	13,5	9,5	8	32	Ø13,8
6	G1/8 "	Ø 1,5 & 3: SW10 Ø 6: SW12	13	SW14	13,5	9,5	8	32	Ø13,8
	G1/4 "	Ø 1,5 & 3: SW10 Ø 6: SW12	13	SW19	20	14	12	38,5	Ø18
	G1/2 "	Ø 1,5 & 3: SW10 Ø 6: SW12	13	SW27	23	17	14	38,5	Ø26

All dimensions in mm | ¹⁾ not available for Ø Inner (I) 6 mm

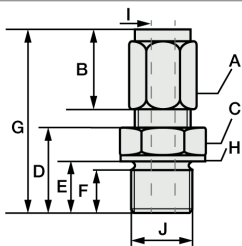
Compression fitting with stainless steel cutting ring

In compression fittings with stainless steel cutting ring, the compression fitting connects with the protective sleeve. This connection is pressure-resistant up to 40 bar. Therefore, these compression fittings can also only be used once and must be tightened more firmly. For assembly, please tighten the union nut of the compression fitting by hand as far as it will go (clearly noticeable). With a wrench suitable for the wrench size, please make 1 3/4 turns for compression fittings with stainless steel cutting ring.

	Article no.	809610 1XXX	Code	I - Ø Inside (mm)	Code	J - Process connection
	Temp. max	+800 °C	1	1,5	27	M6x1 ¹⁾
	Pressure proof up to	40 bar	3	3	28	M8x1 ¹⁾
	Material	Stainless steel 1.4571 316TI	6	6	22	M10x1
	Material clamping ring	Stainless steel 1.4571 316TI			14	G1/8 "
	Scope of delivery	Cutting ring screw fitting, packed in PE bag			12	G1/4 "
					11	G1/2 "
Your order code	809610 1	-	-	-	-	-

Append the code for Ø Inside & process connection to the article no. | ¹⁾ not available for Ø Inside (I) 6 mm

Dimensions for technical drawing



I	J	A	B	C	D	E	F	G	H
1	M6x1 ¹⁾	SW10	13	SW12	13	9	8	31	Ø10
3	M8x1 ¹⁾	SW10	13	SW12	13,5	9,5	8	31	Ø11,8
6	M10x1	Ø 1,5 & 3: SW10 Ø 6: SW12	13	SW14	13,5	9,5	8	32	Ø13,8
	G1/8 "	Ø 1,5 & 3: SW10 Ø 6: SW12	13	SW14	14	9,5	8	32	Ø13,8
	G1/8 "	Ø 1,5 & 3: SW10 Ø 6: SW12	13	SW19	20	14	12	38,5	Ø18
	G1/4 "	Ø 1,5 & 3: SW10 Ø 6: SW12	13	SW27	23	17	14	38,5	Ø26

All dimensions in mm | ¹⁾ not available for Ø Inner (I) 6 mm

MWA / KS / 11.03.2022

Matching accessories: Mounting flange

Steel flange

Article no.	809500 1XXX
Material	Stainless Steel
Fixing	3 x Ø 4,5 mm drill holes
Now please select the size of the hole and append the last digits to your order number.	
A - Hole (mm)	Code
6	060
9	090
10	100
15	150
Your order code 809500 1_ _ _	

Aluminium flange

Article no.	809500 2XXX
Material	Aluminium
Fixing	2 x Ø 4,5 mm drill holes
Now please select the size of the hole and append the last digits to your order number.	
A - Hole (mm)	Code
6	060
11	110
Your order code 809500 2_ _ _	

Plastic flange

Article no.	809500 4XXX
Material	Plastic
Fixing	2 x Ø 4,5 mm drill holes
Now please select the size of the hole and append the last digits to your order number.	
A - Hole (mm)	Code
6	060
12	120
Your order code 809500 4_ _ _	

MWA / KS / 11.03.2022